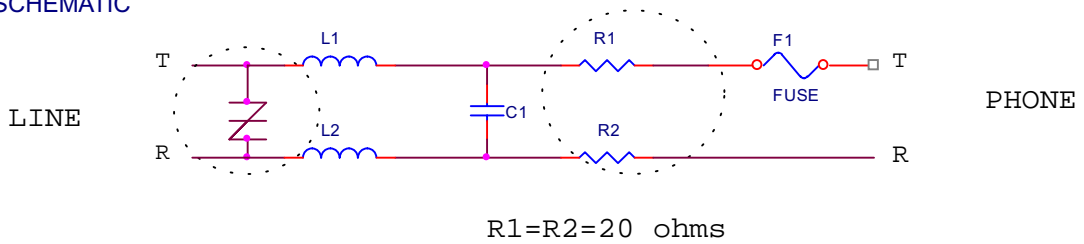
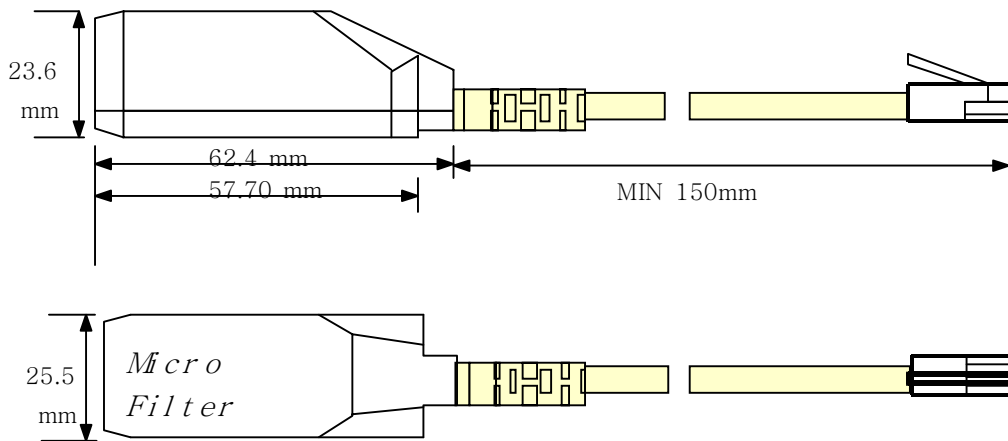


- Available 2wire, 4wire, 6wire (pin no.: 3,4/3,4,2,5/3,4,2,5,1,6)
- In-Line Filter is a device for In-Line connector between the network and a voice grade terminal used to protect high frequencies from entering the terminal and to protect the high frequency equipment from impedance charges of the voice grade terminal.
- Based on standardization of ITU-T G.992.2

> SCHEMATIC



> DIMENSION



> ELECTRICAL SPECIFICATION

SMF-2000	On-hook VB insertion loss				Off-hook VB insertion loss				Off-hook HB bridging loss		
	200 Hz to 1 KHz		1 KHz to 2.8 KHz		200 Hz to 3.4 KHz		3.4 KHz to 4.0 KHz		25KHz to 1.2 MHz	1.2MHz to 10 MHz	
	Max	Min	Max	Min	Max	Min	Max	Min	Max	Max	
Single Filter	1.5dB	-1.5dB	1.5dB	-1.5dB	0.5dB	-1.0dB	1.0dB	-1.5dB	0.5dB	3.0dB	
five Maximum Filter	2.0dB	-4.0dB	2.0dB	-2.0dB	2.5dB	-1.5dB	3.25dB	-2.0dB	1.25dB	4.0dB	
Longitudinal Balance (IEEE method)							HB stopband attenuation				
Operating Current	0.2 KHz to 1 KHz	1 KHz to 12 KHz	12MHz to 1.544MHz	1.544MHz to 10 MHz	Operating Current	25 KHz to 50KHz	50 KHz to 10MHz				
(on) 0 mA	60dB (Min)	40dB (Min)	35dB (Min)	30dB (Min)	(on) 0 mA	12dB (Min)	12dB (Min)				
(off) 7-90 mA	40dB (Min)	40dB (Min)	35dB (Min)	30dB (Min)	(off) 20-90mA	21dB (Min)	25dB (Min)				
							(off) 7 mA	13dB (Min)	22dB (Min)		

FOR MORE INFORMATION, PLEASE CONTACT US.