

***SM-7100***  
***(Text Inserter)***  
***ATM Installation***  
***Manual***



## 1. Overview



- ATM can be linked with RS232 or RS485 transaction Log and after connecting it will be able to record images with signal to the DVR
- POS can be linked with RS232 or RS485 and after connecting it will be able to record in image with signal with outputting the information from POS system on the monitor
- RS232 or RS485 can collect general time information from Access Control entrance and exit after connecting and it will be able to record in image with signal
- SM7100 system as 1Port of CQ500 DVR can be linked and used in ATM systems and/or POS systems or data interface methods of Access Control system where it will be able to accommodate following RS232 and Rs485 selection. RS422 case of Media convertor (RS422 RS485) connection can be used.

SM7100 can be linked and used at OS (OS2 or Windows) in compliance with Switch selections.

1. CQ500T4 DVR with the built in SM7100 function can record 4 Ports simultaneously to CQ500 as an one model image  
CQ500T4 ATM system supports only RS232 interface
2. The SM7100 or CQ500T4 establishment and usage of how to store Transaction Log in image within the ATM system and how to install S/W Program to Windows OS is explained in the chapter 4
3. As for the S/W Program installation for ATM system to OS2 the explanations given in the chapter 4 are not necessary to use. In compliance with linking SM7100 or CQ500T4 to store Transaction Log in image, there is built-in system protocol.

## 2. Specification

### 1) Video

NTSC/PAL Video Type - Factory Setting

Number of characters - Max. 360 Characters on a screen

Video In/Out Level - 1Vpp

Connector : RCA

1 channel Video In/Out

### 2) External interface

1 RS-485 Communication Interface for IBM Machine.

1 RS-232 for NCR

1 RS-232 for ISP(FLIP) - Selectable by DIP Switch

2 RS-232 Serial Port for POS

Max. Communication Speed : 230Kbps

### 3) Power

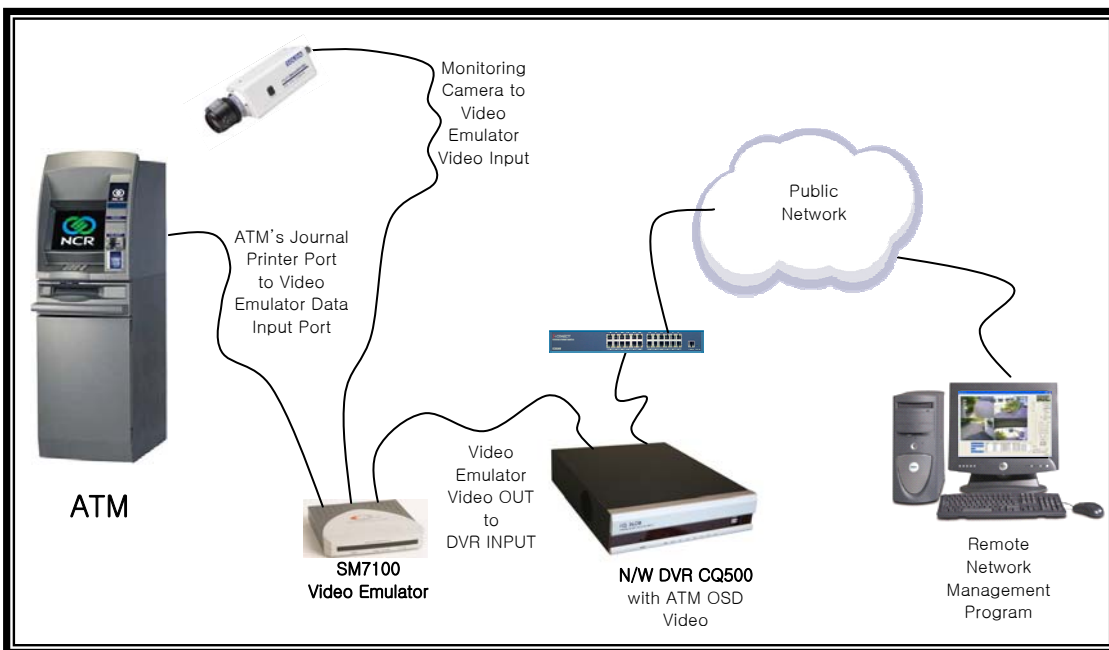
Power DC 8~ 12 V

Power Consumption : 600mW

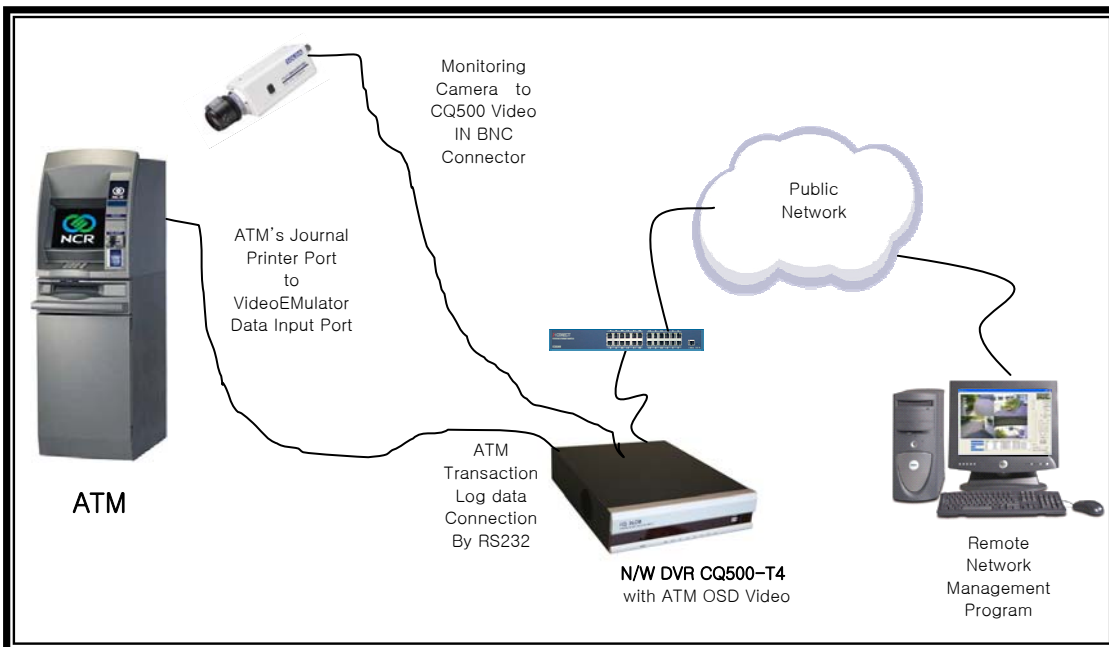


### 3. Diagram

#### 1. SM7100 Installation



#### 2. CQ500-T4 Installation



## 4. Installation at Windows OS ATM

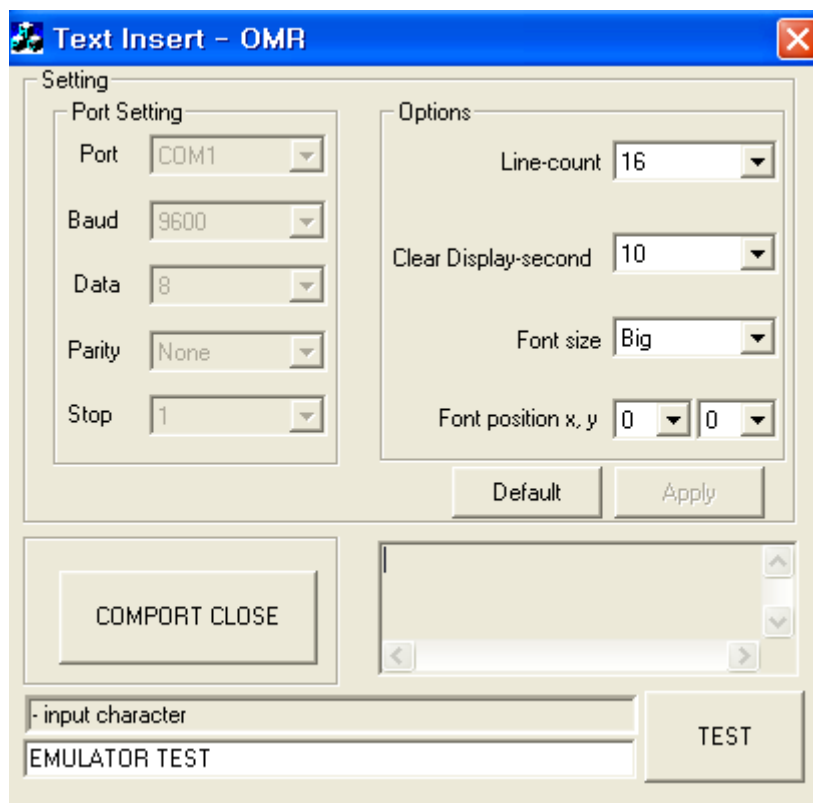
### 1. CD installation

- JOURNAL EMULATOR can be connected via COM port or USB to Serial port.
- Switch on JOURNAL EMULATOR.
- Put the installation CD into the CD Drive.
- The S/W program will start automatically.
- Choose the folder to save the program and press "Next."
- After the installation the program will open automatically.

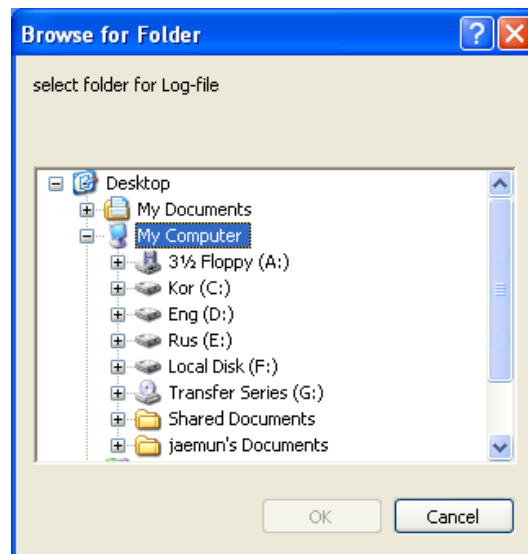
### 2. USB Memory installation

- JOURNAL EMULATOR can be connected via COM port or USB to Serial port.
- Switch on JOURNAL EMULATOR.
- Set USB memory card to the port.
- Click the installation program at the USB memory to start.
- Choose the folder to save the program and press "Next."
- After the installation the program will open automatically.

### 3. Program Function



1. ATM machine equipment type (example: Text Inset - OMR (NCR model) , otherwise, you can see a message "Text Inset - ?" (ATM type does not recognize it)
2. ATM type does not recognize it (in case of Text Inset -?)  
Find Folder button appears automatically.  
Press the button and select the log file course consecutively.
3. Default Button: Changes all the settings to Default.
4. COM PORT selection.
5. Line Count: to select the maximum possible lines.
6. It is necessary in case of maximum lines going over.  
When the maximum line possibilities will go over, the time becomes clear.
7. Clear display time: to select the maximum seconds for viewing period
8. Font size: Font size selection
9. Font position: Font location selection
10. COM PORT CLOSE/OPEN
11. TEST : When you press this, you can see a text line for your test
12. Test Character Input
13. Apply and Save
14. Information Display



#### **Additional Note:**

The Emulator program v. 1.0.0.7 has the default settings to hide the SALDO and BALANCE data. After the program installation, you can find *ParserInfo.ini* file in the directory (Program Files-TextInsert folder) where are given the tokens:

[PARSERINFO]

DOES=\*    ← inputted symbol to hide the data

COUNT=2    ← number of lines with the hidden data

TARGET\_01=SALDO    ← the 1<sup>st</sup> line title where the data will be hidden

TARGET\_02=BALANCE    ← the 2<sup>nd</sup> line title where the data will be hidden

After that, please save the settings and reboot the ATM.

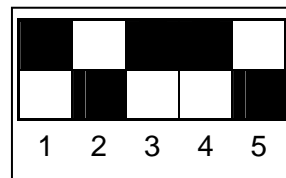
Also, there is the possibility to test the setting – please open the program and type the line title that was set up instead of EMULATOR TEST (e.g. SALDO 12345678) and press TEST button. If the setup is successful, there will appear the following: SALDO \*\*\*\*\*.

## 5. Switch Setup

### 1. SM7100

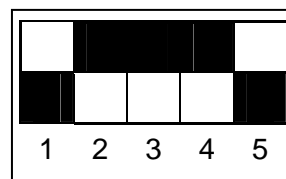
1) On Program Mode: use for Factory (RS232)

	1	2	3	4	5
OFF	↓	↑	↓	↓	↑
ON	↓	↑	↓	↓	↑



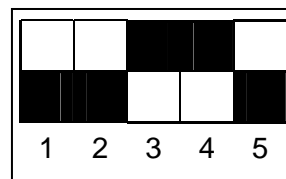
2) **Type** : NCR model, **OS**: OS2, **Interface** : RS232

	1	2	3	4	5
OFF	↑	↓	↓	↓	↑
ON	↑	↓	↓	↓	↑



3) **Type** : All ATM models, **OS**: Windows, **Interface** : RS232

	1	2	3	4	5
OFF	↑	↑	↓	↓	↑
ON	↑	↑	↓	↓	↑



4) **Type** : Diebold 1064iX, **OS**: OS2, **Interface** : RS485

5) **Type** : IBM 4783, **OS**: OS2, **Interface** : RS485

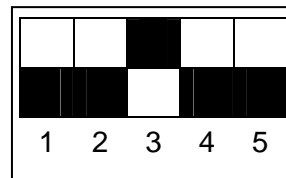
	1	2	3	4	5
OFF	↑	↑	↓	↑	↑
ON	↑	↑	↓	↑	↑



6) **Type** : IBM 4782, **OS**: OS2, **Interface** : RS422

7) **Need Media convertor (RS422 ↔ RS485)**

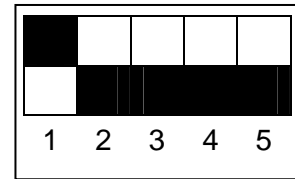
	1	2	3	4	5
OFF	↑	↑	↓	↑	↑
ON	↑	↑	↓	↑	↑



2. CQ500T4 Switch Setup (not support RS485)

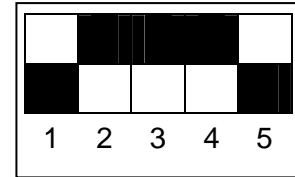
1) On Program Mode: use for Factory (RS232)

	1	2	3	4	5
OFF	↓	↑	↑	↑	↑
ON	↓	↑	↑	↑	↑



2) **Type:** NCR model, **OS:** OS2, **Interface:** RS232

	1	2	3	4	5
OFF	↑	↓	↓	↓	↑
ON	↑	↓	↓	↓	↑



3) **Type:** All ATM models, **OS:** Windows, **Interface:** RS232

	1	2	3	4	5
OFF	↑	↑	↓	↓	↑
ON	↑	↑	↓	↓	↑

