

FEATURES

- low profile, low RDC, high current handling capacities
- Magnetically shielded structure that ensures the high-density mounting configurations.
- Flat bottom surface ensures secure, reliable mounting.
- Provided in embossed carrier tape packaging for use with automatic mounting machines.



APPLICATIONS

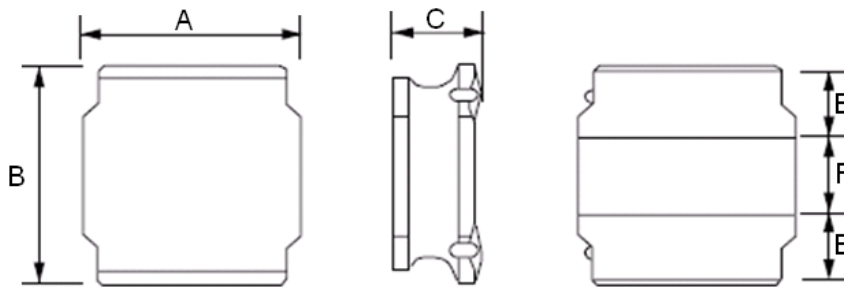
- Ideally used in Portable telephones, , PDA, DSC, DC-DC Converters, etc.

Product Identification

MPIT 3015 - 3R3 M LF
 ① ② ③ ④ ⑤

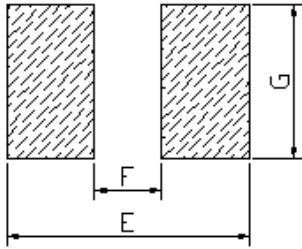
- ① Series **Name**
- ② Product **Dimensions:** (3015=3.0*3.0*1.5 mm)
- ③ Inductance Value: (R68=0.68uH 3R3=3.3uH 100=10uH)
- ④ Inductance Tolerance: (M:20% ; N:30%)
- ⑤ **Lead Free Products**

Shapes and Dimensions



Series	Dimensions(mm)				
	A	B	C Max.	E Ref.	F Ref.
MPIT3010	3.0±0.3	3.0±0.3	1.2	0.90	1.0
MPIT3015	3.0±0.3	3.0±0.3	1.7	0.90	1.0
MPIT4018	4.0±0.3	4.0±0.3	2.0	1.10	1.4
MPIT4026	4.0±0.3	4.0±0.3	2.8	1.10	1.4
MPIT6045	6.0±0.3	6.0±0.3	4.5	1.35	2.7
MPIT8040	8.0±0.3	8.0±0.3	4.0	1.60	4.0

Recommended Footprint



Series	Dimensions(mm)		
	E ref.	F ref.	G ref.
MPIT30 Series	3.0	1.6	2.7
MPIT40 Series	4.0	1.6	3.7
MPIT60 Series	6.3	3.1	5.7
MPIT80 Series	7.4	3.8	7.5

Electrical Characteristics

MPIT3010 Series

Part Number	L (uH)	Tolerance (±%)	Rdc Max.(mΩ)	Idc Typ. (mA)	
				L ↓ 30%	T ↑ 40°C
MPIT3010-1R0 □-LF	1.00	30	84.5	1300	1400
MPIT3010-1R5 □-LF	1.50	30	104	1200	1300
MPIT3010-2R2 □-LF	2.20	20	124	1100	1100
MPIT3010-3R3 □-LF	3.30	20	182	870	940
MPIT3010-4R7 □-LF	4.70	20	247	750	780
MPIT3010-6R8 □-LF	6.80	20	390	610	630
MPIT3010-100 □-LF	10.0	20	585	500	510
MPIT3010-150 □-LF	15.0	20	962	400	400
MPIT3010-220 □-LF	22.0	20	1339	350	350
MPIT3010-330 □-LF	33.0	20	2015	260	275
MPIT3010-470 □-LF	47.0	20	2665	220	235

MPIT3015 Series

Part Number	L (uH)	Tolerance (±%)	Rdc Max.(mΩ)	Idc Typ. (mA)	
				L ↓ 30%	T ↑ 40°C
MPIT3015-1R0 □-LF	1.00	30	39	2100	2100
MPIT3015-1R5 □-LF	1.50	30	52	1800	1820
MPIT3015-2R2 □-LF	2.20	20	78	1480	1500
MPIT3015-3R3 □-LF	3.30	20	104	1210	1230
MPIT3015-4R7 □-LF	4.70	20	156	1020	1040
MPIT3015-6R8 □-LF	6.80	20	208	870	880
MPIT3015-100 □-LF	10.0	20	299	700	710
MPIT3015-150 □-LF	15.0	20	468	560	560
MPIT3015-220 □-LF	22.0	20	676	470	470
MPIT3015-330 □-LF	33.0	20	1092	390	370
MPIT3015-470 □-LF	47.0	20	1742	320	300

Electrical Characteristics

MPIT4018 Series

Part Number	L (μ H)	Tolerance (\pm %)	Rdc Max.(m Ω)	Idc Typ. (mA)	
				L \downarrow 30%	T \uparrow 40 $^{\circ}$ C
MPIT4018-1R0 □-LF	1.00	30	39	4000	1830
MPIT4018-2R2 □-LF	2.20	20	78	2700	1440
MPIT4018-3R3 □-LF	3.30	20	91	2000	1230
MPIT4018-4R7 □-LF	4.70	20	117	1700	1200
MPIT4018-5R6 □-LF	5.60	20	143	1450	1060
MPIT4018-6R8 □-LF	6.80	20	234	1200	840
MPIT4018-100 □-LF	10.0	20	325	940	650
MPIT4018-150 □-LF	15.0	20	468	800	590
MPIT4018-220 □-LF	22.0	20	689	650	490
MPIT4018-470 □-LF	47.0	20	845	570	420
MPIT4018-680 □-LF	68.0	20	1300	470	320
MPIT4018-101 □-LF	100.0	20	1950	400	270
MPIT4018-151 □-LF	150.0	20	3250	310	220
MPIT4018-221 □-LF	220.0	20	5200	270	170

MPIT4026 Series

Part Number	L (μ H)	Tolerance (\pm %)	Rdc Max.(m Ω)	Idc Typ. (mA)	
				L \downarrow 30%	T \uparrow 40 $^{\circ}$ C
MPIT4026-1R0 □-LF	1.00	30	39	3100	2300
MPIT4026-2R2 □-LF	2.20	20	52	2100	1970
MPIT4026-3R3 □-LF	3.30	20	65	1800	1700
MPIT4026-4R7 □-LF	4.70	20	71.5	1450	1600
MPIT4026-6R8 □-LF	6.80	20	84.5	1300	1500
MPIT4026-100 □-LF	10.0	20	110.5	1000	1300
MPIT4026-220 □-LF	22.0	20	143	900	1100
MPIT4026-220 □-LF	33.0	20	214.5	610	900
MPIT4026-470 □-LF	47.0	20	260	540	800
MPIT4026-101 □-LF	100.0	20	390	410	650

Electrical Characteristics

MPIT6045 Series

Part Number	L (uH)	Tolerance (±%)	Rdc Max.(mΩ)	Idc Typ. (mA)	
				L ↓ 30%	T ↑ 40°C
MPIT6045-1R0 □-LF	1.00	30	19	8500	4200
MPIT6045-1R3 □-LF	1.30	30	21	8000	4000
MPIT6045-1R8 □-LF	1.80	30	24	7000	3700
MPIT6045-2R3 □-LF	2.30	30	27	6000	3500
MPIT6045-3R0 □-LF	3.00	30	31	5000	3200
MPIT6045-4R5 □-LF	4.50	20	41	4000	3000
MPIT6045-6R3 □-LF	6.30	20	50	3800	2800
MPIT6045-100 □-LF	10.0	20	62	3000	2500
MPIT6045-150 □-LF	15.0	20	100	2300	1900
MPIT6045-220 □-LF	22.0	20	150	1900	1500
MPIT6045-330 □-LF	33.0	20	189	1500	1400
MPIT6045-470 □-LF	47.0	20	286	1300	1100
MPIT6045-680 □-LF	68.0	20	429	1000	900
MPIT6045-101 □-LF	100.0	20	650	800	700

MPIT8040 Series

Part Number	L (uH)	Tolerance (±%)	Rdc Max.(mΩ)	Idc Typ. (mA)	
				L ↓ 30%	T ↑ 40°C
MPIT8040-0R9 □-LF	0.90	30	8	11000	7800
MPIT8040-1R4 □-LF	1.40	30	10	9000	7000
MPIT8040-2R0 □-LF	2.00	30	12	7400	6300
MPIT8040-3R6 □-LF	3.60	30	20	5300	4900
MPIT8040-4R7 □-LF	4.70	30	24	4700	4100
MPIT8040-6R8 □-LF	6.80	30	33	4000	3700
MPIT8040-100 □-LF	10.0	20	45	3400	3100
MPIT8040-150 □-LF	15.0	20	65	2700	2400
MPIT8040-220 □-LF	22.0	20	86	2200	2200
MPIT8040-330 □-LF	33.0	20	130	1900	1700
MPIT8040-470 □-LF	47.0	20	195	1500	1400
MPIT8040-680 □-LF	68.0	20	299	1200	1100
MPIT8040-101 □-LF	100.0	20	377	1000	1000

1. L , Idc: Agilent/HP 4284A , 100KHz with 0.1V.
3. Rdc : DIGITAL MILLIOHM METER Chroma 16502, or equivalent.
4. IDC1: Based on inductance change ($\Delta L/L_0$: $\leq -30\%$) @ ambient temp. 25°C
IDC2: Based on temperature rise (ΔT : 40°C TYP.)
5. Operating temperature range from -25°C to 85°C.